

jmSwitch Graphic User Interface

This is a graphical user interface for jmCLIG firmware module jmSwitch.c

The firmware module must be compiled and loaded into the chip before using the graphical user interface.

The firmware can be used with a standard communication application, like HyperTerminal, but jmSwitch is more user friendly and limit access to pins on MBED prototyping board (DIP5 to DIP30).

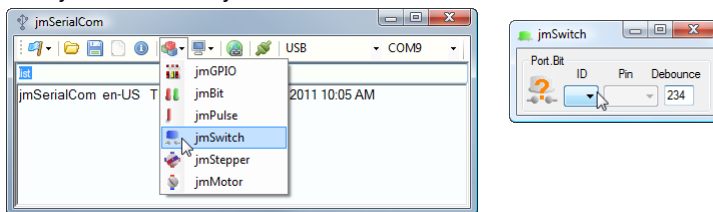
This module can start up to 8 different processes for detecting input switch states on MBED DIP pins.

This module automatically sets the pin as an input pin and start a process that continually monitors input pin levels and reports level changes. There is no need to configure pin direction before using it.

Mechanical switches can be used, and a debounce period can be edited.

How

Start jmSwitch from jmSerialCom

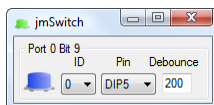


Select a process ID for your input, the control will send a message to the chip, the chip will report the status of that process.

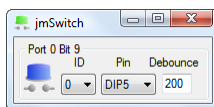
If the process is not initialized, a question mark over a grey switch will be shown.

If a process is running, the Pin selection box will be updated with the name of the pin connected to that process.

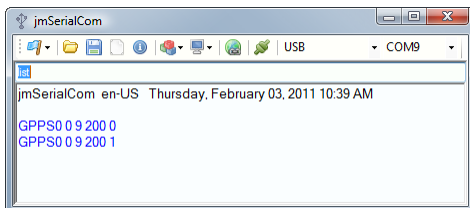
You select another pin for that process just by using the Pin selection box.



Close state reported by the chip and GUI updated.



Open state reported by the chip and GUI updated.



Chip reports as seen in jmSerialCom text zone.